

Providing the most effective solutions
for design and use of test environments
in life science research

Housing

UNO-LIFESCIENCE.COM

UNO SMALL LAB ANIMAL HOUSING

UNO is a well known supplier of a wide range of housing products for the laboratory animal market. Next to our standard line of housing products, UNO has a very successful engineering department which is constantly working to improve the quality of the products and integrating specific customer needs into "standard" products.

UNO Plastic cages are made of top quality plastics. The cages can be cleaned in an autoclave, are fully transparent and non-fading. The use of this type of cage has already become a byword in the trade...

*** Choise of material for plastic cages**

If you have to make the choise between polycarbonate or polysulphone cages purely for a costs point of view, you have to consider that the difference in costs between polycarbonate and polysulphone is 1:3. Therefore an investment in polysulphone can be justified if the lifetime of polysulphone is three times longer than the lifetime of polycarbonate. With a polycarbonate cage lifetime of about a 2 years, switching to polysulphone will start to be economically justified after six years. This can be considered a healthy investment. However if your lifetime of polycarbonate cages is 5 years, polysulphone will only become economical after 15 years. This is to be considered a riskfull investment due to new developments in the industry.

*** General guidelines about washing and sterilization**

Polycarbonate

In the sterilization of animal cages made from polycarbonate the material may be damaged if there are alkaline cleaner residues or dried-on softened water on the surface. Consequently, any such residues must be completely removed by rinsing with fresh, alkali free water. The use of an acid rinse aid could prevent attack on the material. If soiled cages are autoclaved before cleaning, polycarbonate will be damaged.

Polycarbonate drinking bottles are generally cleaned using an acid cleaning process and finally rinsed well. Since the bottles are, as a rule, filled with water immediately after cleaning, the use of rinse aids is not required.

Polysulphone

Animal cages made from polysulphone are chemically more resistant than those made from polycarbonate and hence even allow autoclaving with soiled litter. Nevertheless, rinse cleaners should carefully be selected. Through the action of certain surfactants frequently used in cleaners and rinse aids, damage in the form of stress cracks can occur after autoclaving.

Washing

Use softened water.

Plastic cages should be washed at a temperature of max. 55°C. Rinsing and neutralising during a short period of time can be done at about 80°C.

Eventhough alkaline detergents are more effective in removing organic residues, when in contact with polycarbonate they will cause corrosions or hydrolysis. Therefore, if used, thorough neutralizing is necessary.

Acid detergents can be used if urine or hard water scaling is a problem. Mostly there is no need to neutralize them.

Alkali detergents should not be used in case of hand washing, especially if sinking the cages in a pre-soak tank.

PLASTIC CAGES & WIRE LIDS

Autoclaving

Make sure no detergent and rinse aids residues are left on the surface; the autoclaving process will cause the residue to be baked on, which can cause chemical damage and loss in clarity of the material.

Use as short as autoclave cycle as possible. Minimum exposure of 20 minutes at 121 °C is recommended. Do not stack more than 10 cages.

If you choose not to wash the cages before autoclaving, you must be aware that the left diet and bedding material could release damaging substances when heated. This could cause cracking of the plastic. If you need to autoclave cages with bedding inside, use high quality bedding.

Disinfection

Do not heat cages or bottles that contain disinfectant residue.

Check with the supplier/manufacturer of the disinfectant regarding the use of the disinfectant on plastic cages. * This information is a guideline only, based on generally available information.

* Heat- and chemical resistance of polycarbonate and polysulfone material*

		Autoclavable at	Max. Heat level	Transparency	Sterilisation				
					Auto-clave	Radiation	Gas	Dry Heat	Disinfect.
Polycarbonate	PC	120 °C	138 °C	Clear	✓	✓	✓	✗	✓
Polysulphone	PSU	134 °C	165 °C	Clear	✓	✓	✓	✗	✓

- Max. heat levels: at this temperature a solid piece of plastic will deflect under a pressure of 66psi. Therefore it is not recommended to expose animal cages to these temperatures.
- Autoclaving: during 20 minutes at 120 °C. It is highly recommended to clean and rinse the cages with softened water before autoclaving to prevent certain chemicals effecting the plastic during the autoclaving process.
- Radiation: gamma irradiation at 25 kGy
- Gas: Ethylene Oxide, Hydrogen Peroxide, Formaldehyde
- Disinfect: Formalin, Ethanol, Formaldehyde, Benzalkonium Chloride

* This information is a guideline only, based on generally available information.

Chemical Resistance	Acids Dilute or weak	Bases	Esters	Oxidant Agents, strong
Polycarbonate PC	Excellent	Not recommended	Not recommended	Not recommended
Polysulfone PSU	Excellent	Not recommended	Not recommended	Not recommended

- Excellent: no damages after 30days of constant exposure.
- Not recommended: Immediate damage may occur; severe crazing, cracking, loss of strenght, discoloration and deformation.

* This information is a guideline only, based on generally available information.

UNO SMALL LAB ANIMAL HOUSING

Micro-isolator system / Filtertopcages



The UNO cage and filtertop system has been developed for two purposes:

- 1. to protect animals during transport**
- 2. to create a micro isolator**

1. By placing a filtertop on the animal cages during any kind of transport, the animals can be protected against contamination from the outside environment.
2. The cage and filtertop unit can be regarded as a micro isolator in which animals can be held permanently. It is a simple alternative to the complex barrier room system creating the barrier at cage level.

Such an unit offers the following advantages;

- Animals from different sources with different microbiological profiles can be maintained in the same room without cross contamination;
- Investigators can experimentally infect animal with a variety of microbial agents in the same room without interfering with one another's research;
- Many different species of animals can be maintained on study within the same room;
- There is no need for a clean/dirty corridor system;
- Personnel do not have to shower into or out of the room;
- Personnel with animal allergies can work in comfort;
- Animals housed in micro isolator units are not only protected from contamination of other lab animals, but are also protected against contamination by people.

The UNO filtertop is made of polycarbonate or polysulphone; can be washed and is autoclavable in the same way as the UNO polycarbonate or polysulphone cages. The filtersheet is made of polyester, can be washed and is autoclavable, but has to be replaced after approx. 10 times of utilisation.

The UNO cage and filtertop unit protects the animal it houses by relying upon a classic Petri Dish like effect; the filtertop overlaps the cage. This results in protection against microbial contamination while allowing for gaseous exchange.

To effectively maintain the isolation of the animals at all times, cages must be opened and serviced within a Class 100 work bench and aseptically supplied with sterile or pasteurised food, bedding and water.

Further notes:

Filtertops can be delivered with or without clips to prevent undesired removal of the top.

The wirelids are placed on the rim of cage and the filtertop is placed over it.

Raised wire lids are also available for the type III filtertops.

A special label holder is developed to put on the front of the filtertop. Available for both type II and type III filtertops.

Both filtertops and cages can be stacked easily.

We hope that this brief explanation will give you some understanding on the use on the UNO filtertop system. If you would like to have additional information or would like to receive a quotation on a specified number of cage and filtertop units, please feel free to contact us.

UNO SMALL LAB ANIMAL HOUSING

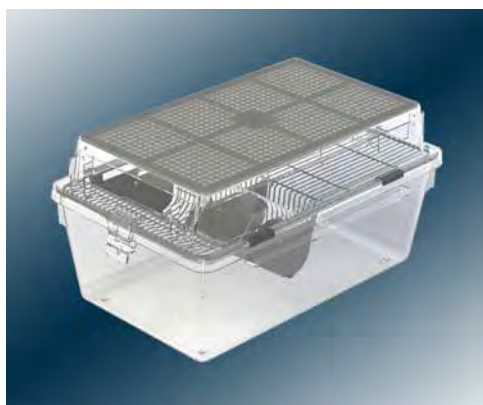
Micro-isolator system / Filtertopcages



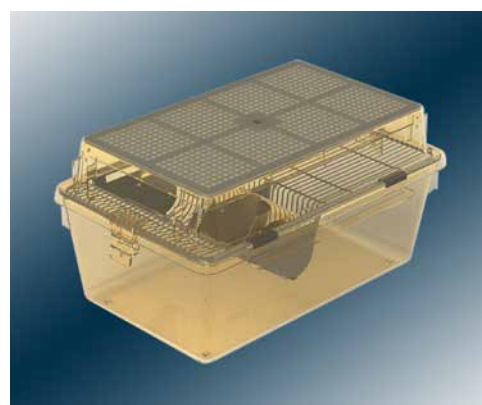
UNO Filtertopcage Type II	
Ordering number	031200260
Polycarbonate cage type II	031200129
Polycarbonate filtertop complete	031200261C
S.s. wire lid type IIS FK	030100270



UNO Filtertopcage Type II	
Ordering number	031200260U
Polysulphone cage type II	031200129U
Polysulphone filtertop complete	031200261UC
S.s. wire lid type IIS FK	030100270



UNO Filtertopcage Type III	
Ordering number	031200230
Polycarbonate cage type III	031200256
Polycarbonate filtertop complete	031200231C
S.s. wire lid type IIIS FK	030100245



UNO Filtertopcage Type III	
Ordering number	031200230U
Polysulphone cage type III	031200256U
Polysulphone filtertop complete	031200231UC
S.s. wire lid type IIIS FK	030100245



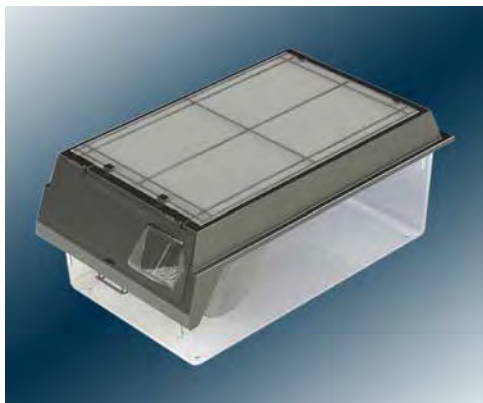
UNO Filtertopcage Type III H	
Ordering number	031200230H
Polycarbonate cage type III H	031200133
Polycarbonate filtertop complete	031200231C
S.s. wire lid type IIIS FK	030100245



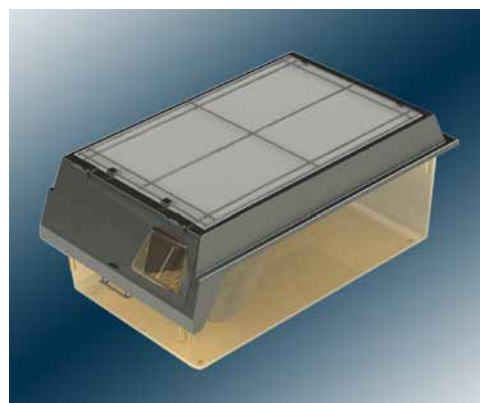
UNO Filtertopcage Type III H	
Ordering number	031200230HU
Polysulphone cage type III H	031200205
Polysulphone filtertop complete	031200231UC
S.s. wire lid type IIIS FK	030100245

UNO SMALL LAB ANIMAL HOUSING

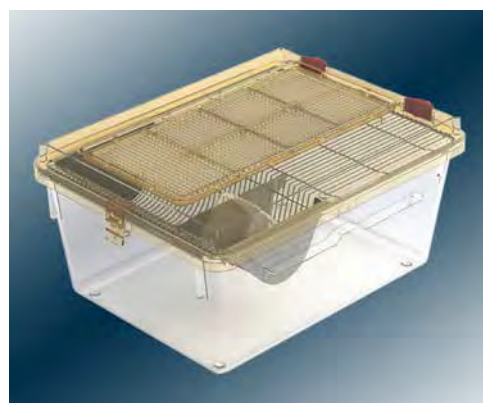
Micro-isolator system / Filtertopcages



UNO Filtertopcage Type IV	
Ordering number	031200270
Polycarbonate cage type IV	031200126
Stainless Steel filtertop complete	031200271



UNO Filtertopcage Type IV	
Ordering number	031200270U
Polysulphone cage type IV	031200126U
Stainless Steel filtertop complete	031200271



UNO Filtertopcage Type IVS	
Ordering number	031200290
Polycarbonate cage type IVS	031200135
Polysulphone filtertop complete	031200291C
S.s. wire lid type IVS FK	030100274



UNO Filtertopcage Type IVS	
Ordering number	031200290U
Polysulphone cage type IVS	031200135U
Polysulphone filtertop complete	031200291C
S.s. wire lid type IVS FK	030100274

UNO SMALL LAB ANIMAL HOUSING

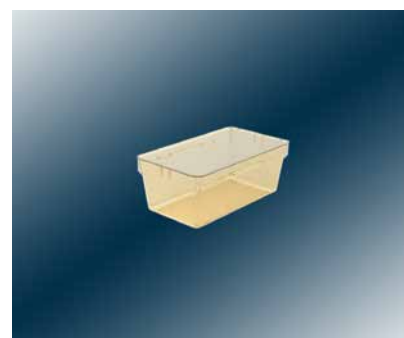
Cage Type I

Dimensions Bottom	204 x 100mm
Dimensions Top	235 x 150mm
Floor area	204cm ²
Height	130mm
Weight	297gr
Ordering number	
Polycarbonate	031200123
Polysulphone	Not Available
Note only without stacking nobs	



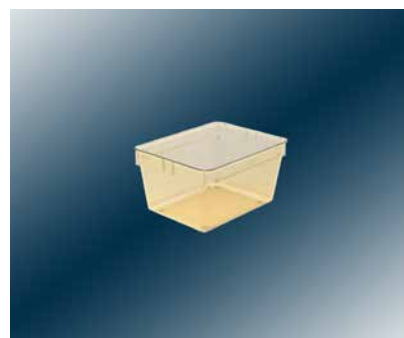
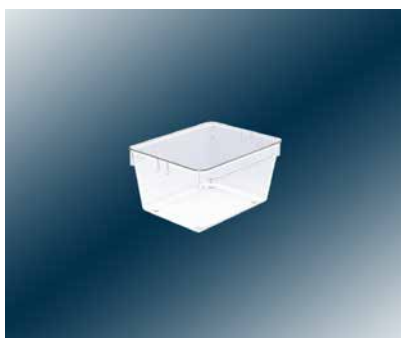
Cage Type I L (I Long)

Dimensions Bottom	300 x 120mm
Dimensions Top	332 x 150mm
Floor area	360cm ²
Height	130mm
Weight	465gr
Ordering number	
Polycarbonate	031200134
Polysulphone	031200134U
Note PC also available without stacking nobs 031200131	



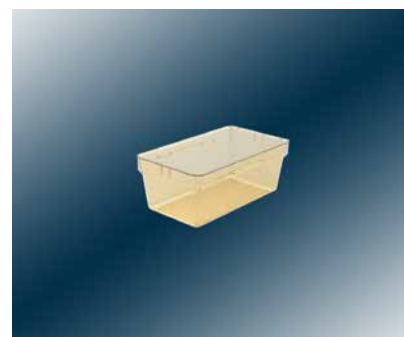
Cage Type II

Dimensions Bottom	225 x 167mm
Dimensions Top	267 x 208mm
Floor area	375cm ²
Height	140mm
Weight	485gr
Ordering number	
Polycarbonate	031200129
Polysulphone	031200129U
Note PC also available without stacking nobs 031200124	

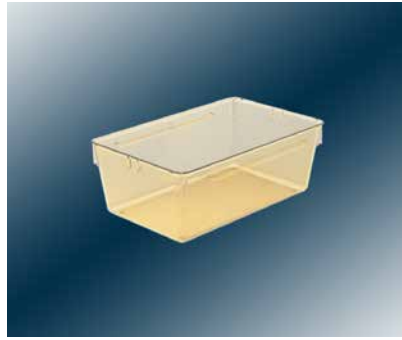


Cage Type II L (II Long)

Dimensions Bottom	325 x 170mm
Dimensions Top	345 x 180mm
Floor area	553cm ²
Height	140mm
Weight	611gr
Ordering number	
Polycarbonate	031200200
Polysulphone	031200200U
Note only available with stacking nobs	



UNO SMALL LAB ANIMAL HOUSING



Cage Type III	
Dimensions Bottom	382 x 220mm
Dimensions Top	427 x 267mm
Floor area	840cm ²
Height	150mm
Weight	975gr
Ordering number	
Polycarbonate	031200256
Polysulphone	031200256U
Note PC also available without stacking nobs 031200125	



Cage Type III H	
Dimensions Bottom	378 x 217mm
Dimensions Top	427 x 267mm
Floor area	820cm ²
Height	180mm
Weight	1.165gr
Ordering number	
Polycarbonate	031200133
Polysulphone	031200205
Note PC also available without stacking nobs 031200132	



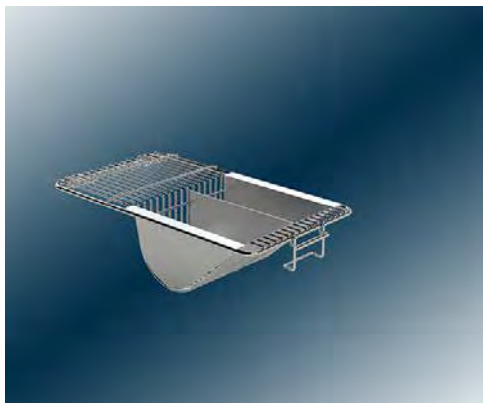
Cage Type IVS	
Dimensions Bottom	439 x 319mm
Dimensions Top	500 x 380mm
Floor area	1.400cm ²
Height	208mm
Weight	1.910gr
Ordering number	
Polycarbonate	031200135
Polysulphone	031200135U
Note only available with stacking nobs	



Cage Type IV	
Dimensions Bottom	556 x 334mm
Dimensions Top	600 x 380mm
Floor area	1.875cm ²
Height	195mm
Weight	2.150gr
Ordering number	
Polycarbonate	031200126
Polysulphone	031200126U
Note only available with stacking nobs	

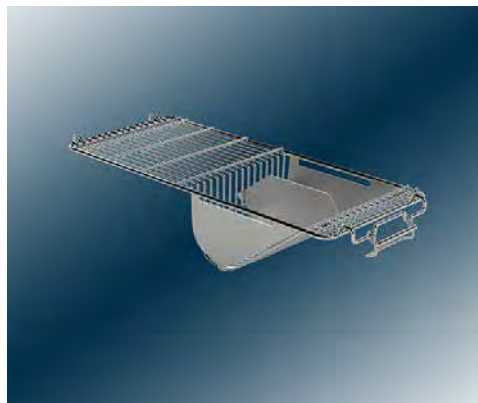
UNO SMALL LAB ANIMAL HOUSING

Wire Lids for cages Type I



Wire Lid Type I *only on special demand	
Ordering number	030100061
Material	Stainless Steel
Dividing panel optional	
Ordering number dividing panel	030100062

Wire Lids for cages Type I L



Wire Lid Type I LS	
Ordering number	030100355
Material	Stainless Steel
With integrated dividing panel and drinking plate	

Wire Lids for cages Type II



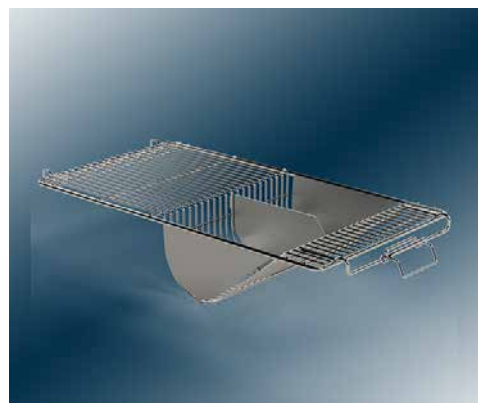
Wire Lid Type IIS	
Ordering number	030100159
Material	Stainless Steel
With integrated dividing panel and drinking plate	

Wire Lids for cages Type II L



Wire Lid Type IIS FK	
Ordering number	030100270
Material	Stainless Steel
With integrated dividing panel and drinking plate	
For use with UNO Filtertop type II	

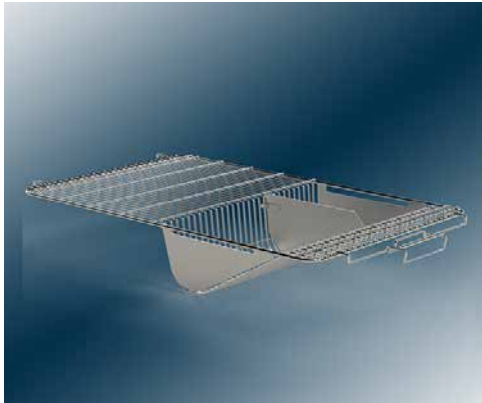
Wire Lids for cages Type II L



Wire Lid Type II LS	
Ordering number	030100375
Material	Stainless Steel
With integrated dividing panel and drinking plate	

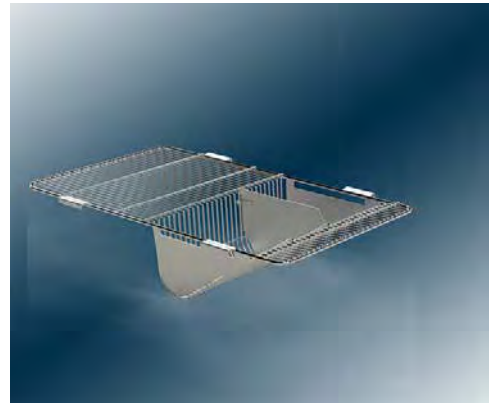
UNO SMALL LAB ANIMAL HOUSING

Wire Lids for cages Type III AND cages Type IIH



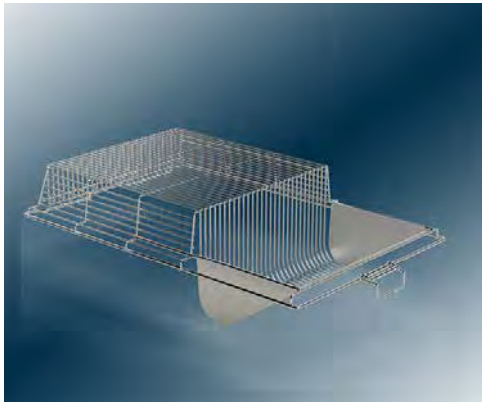
Wire Lid Type IIIS

Ordering number	030100240
Material	Stainless Steel
With integrated dividing panel and drinking plate	



Wire Lid Type IIIS FK

Ordering number	030100245
Material	Stainless Steel
With integrated dividing panel and drinking plate	
For use with UNO Filtertop type III	



Wire Lid Type IIHS - 50mm raised

Ordering number	030100360
Material	Stainless Steel
With integrated dividing panel and drinking plate	

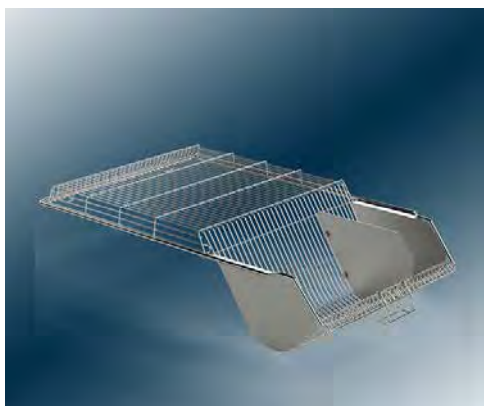


Wire Lid Type IIIS FK - 30mm raised

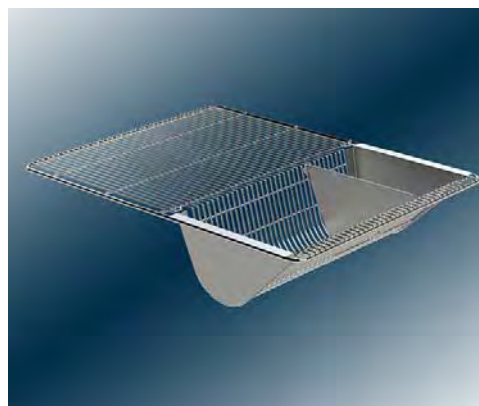
Ordering number	030100238
Material	Stainless Steel
With integrated dividing panel and drinking plate	
For use with UNO Filtertop type III	

UNO SMALL LAB ANIMAL HOUSING

Wire Lids for cages Type IVS

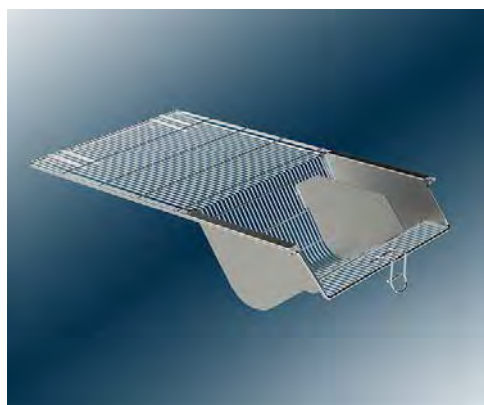


Wire Lid Type IVS	
Ordering number	030100373
Material	Stainless Steel
With integrated dividing panel and drinking plate	

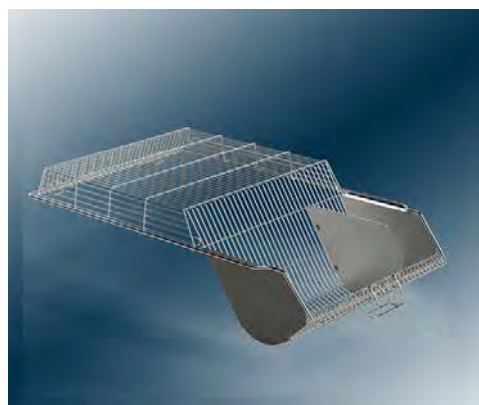


Wire Lid Type IVS FK	
Ordering number	030100374
Material	Stainless Steel
With integrated dividing panel and drinking plate	

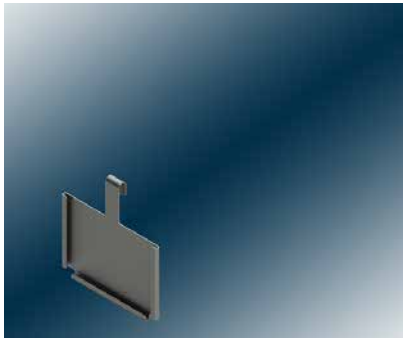
Wire Lids for cages Type IV



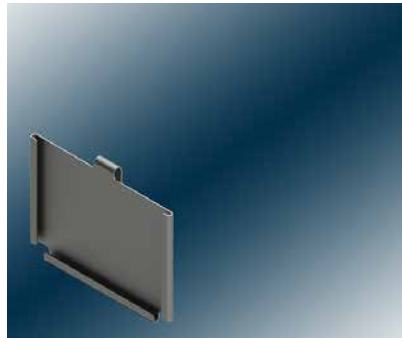
Wire Lid Type IVSP	
Ordering number	030100470
Material	Stainless Steel
With integrated dividing panel and drinking plate	



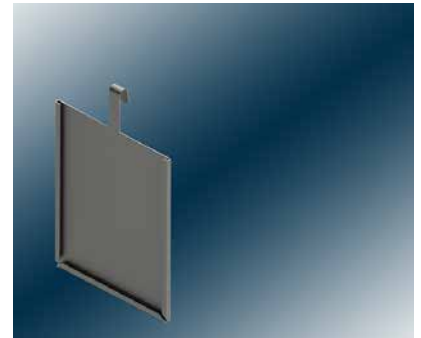
Wire Lid Type IVSP H - 50mm raised	
Ordering number	030100279
Material	Stainless Steel
With integrated dividing panel and drinking plate	



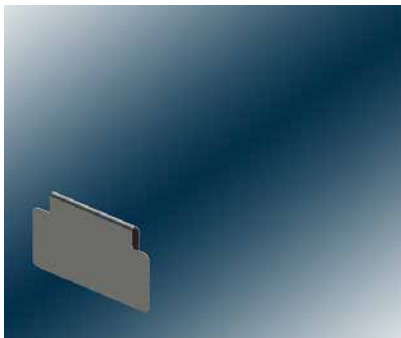
Label holder	
Ordering number	030100257
Dimensions	DIN A7 74 x 105mm
Material	Stainless Steel



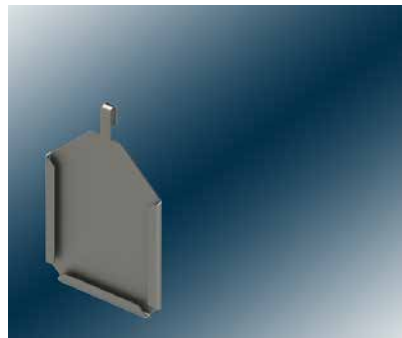
Label holder	
Ordering number	030100257K
Dimensions	DIN A7 74 x 105mm
Material	Stainless Steel



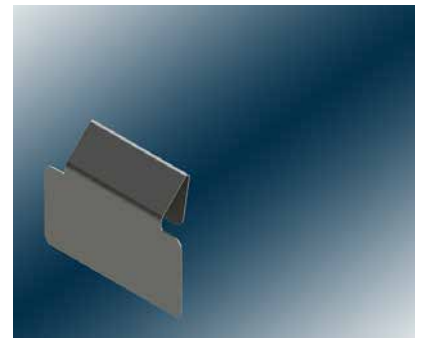
Label holder	
Ordering number	030100181
Dimensions	DIN A6 105 x 148mm
Material	Stainless Steel



Label holder	
Ordering number	030100900
Dimensions	100 x 50mm
Material	Stainless Steel



Label holder	
Ordering number	030100901
Dimensions	75 x 105mm
Material	Stainless Steel



Label holder	
Ordering number	030100902
Dimensions	100 x 50
Material	Stainless Steel

UNO SMALL LAB ANIMAL HOUSING

Drinking bottles - Polycarbonate



Drinking Bottle 200ml	
Ordering number	051200431
Dimensions	H 108mm x Ø 55mm
Suitable for	S.s. drinking caps Neoprenstopper
Material	Polycarbonate



Drinking Bottle 250ml	
Ordering number	051200532
Dimensions	H 128mm x Ø 55mm
Suitable for	S.s. drinking caps Neoprenstopper
Material	Polycarbonate



Drinking Bottle 300ml	
Ordering number	051200432
Dimensions	H 144mm x Ø 56mm
Suitable for	S.s. drinking caps Neoprenstopper
Material	Polycarbonate



Drinking Bottle 300ml	
Ordering number	051200031
Dimensions	H 134mm x Ø 61mm
Suitable for	Neoprenstopper
Material	Polycarbonate



Drinking Bottle 400ml	
Ordering number	051200134
Dimensions	H 120mm x Ø 72mm
Suitable for	S.s. drinking caps Neoprenstopper
Material	Polycarbonate



Drinking Bottle 750ml	
Ordering number	051200232
Dimensions	H 180mm x Ø 72mm
Suitable for	S.s. drinking caps Neoprenstopper
Material	Polycarbonate

Drinking Bottle 500ml	
Ordering number	051200133
Dimensions	H 184mm x Ø 68mm
Suitable for	S.s. drinking caps Neoprenstopper
Material	Polycarbonate



UNO SMALL LAB ANIMAL HOUSING

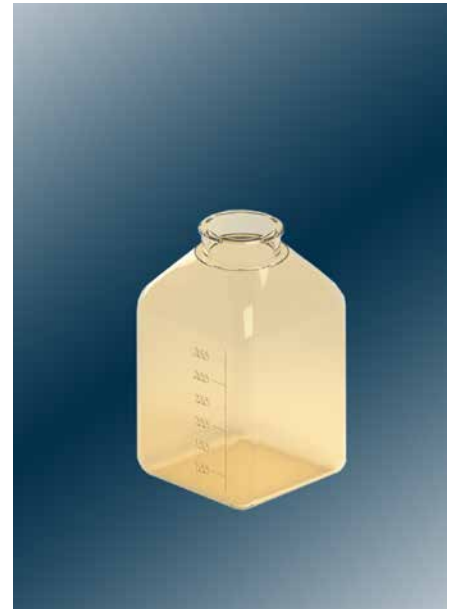
Drinking bottles - Polysulphone



Drinking Bottle 200ml	
Ordering number	051200434
Dimensions	H 108mm x Ø 55mm
Suitable for	S.s. drinking caps Neoprenstopper
Material	Polysulphone



Drinking Bottle 250ml	
Ordering number	051200531
Dimensions	H 128mm x Ø 55mm
Suitable for	S.s. drinking caps Neoprenstopper
Material	Polysulphone



Drinking Bottle 450ml	
Ordering number	051200450
Dimensions	H 144mm x Ø 56mm
Suitable for	S.s. drinking caps Neoprenstopper
Material	Polysulphone



Drinking Bottle 500ml	
Ordering number	051200233
Dimensions	H 184mm x Ø 68mm
Suitable for	S.s. drinking caps Neoprenstopper
Material	Polysulphone



Drinking Bottle 750ml	
Ordering number	051200332
Dimensions	H 180mm x Ø 72mm
Suitable for	S.s. drinking caps Neoprenstopper
Material	Polysulphone

UNO SMALL LAB ANIMAL HOUSING

Drinking Supplies - Drinking caps and Neoprenstoppers



Drinking Cap	
Ordering number	050100347
Shape	Straight
Suitable for	Mouse/Rat
Material	Stainless Steel
Valve LxØ	25*6mm



Drinking Cap	
Ordering number	050100335
Shape	Straight
Suitable for	Mouse/Rat
Material	Stainless Steel
Valve LxØ	40*6mm



Drinking Cap	
Ordering number	050100030
Shape	Peaked
Suitable for	Mouse
Material	Stainless Steel



Drinking Cap	
Ordering number	050100249
Shape	bent
Suitable for	Rabbit
Material	Stainless Steel
Valve LxØ	100*8mm



Rings to be used with the Caps	
Ordering number	052400023
Material	Silicone
Shape	Solid



Rings to be used with the Caps	
Ordering number	052400025
Material	Silicone
Shape	Ribbed



Stopper with drinking valve	
Ordering number	050100016
Valve Type	TD100
Shape	Straight
Suitable for	Mouse/Rat
Material Valve	Stainless Steel
Material stopper	Rubber with s.s. protection sheet
Valve LxØ	48*8mm



Stopper with drinking valve	
Ordering number	050100017
Valve Type	TD101
Shape	Straight
Suitable for	Mouse/Rat
Material Valve	Stainless Steel
Material stopper	Rubber with s.s. protection sheet
Valve LxØ	74*8mm



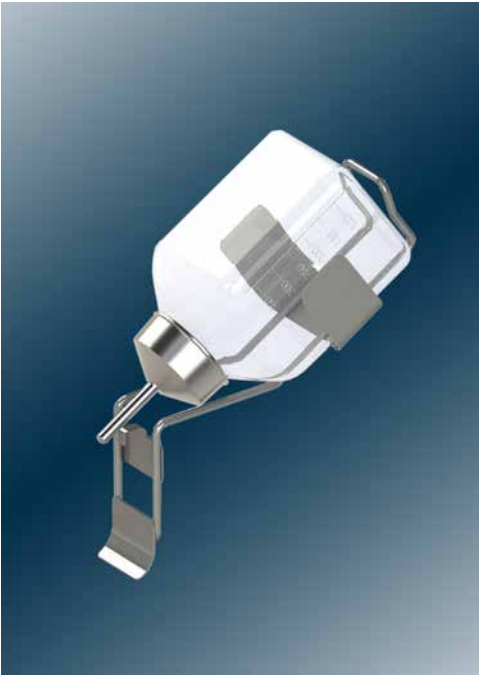
Stopper with drinking valve	
Ordering number	050100020
Valve Type	TD201
Shape	Bent
Suitable for	Rabbit
Material Valve	Stainless Steel
Material stopper	Rubber with s.s. protection sheet
Valve LxØ	110*8mm



Stopper with drinking valve	
Ordering number	050100149
Valve Type	TD200
Shape	Bent
Suitable for	Rabbit
Material Valve	Stainless Steel
Material stopper	Rubber with s.s. protection sheet
Valve LxØ	85*8mm

All valves are also available without the neoprenstopper. Just add -S to the product number. Neoprenstoppers are also available without the valves: product number: 052400022.

Drinking bottle holders



Bottle holder	
Ordering number	050100104
Suitable for	Bottle 400ml
Material	Stainless Steel



Bottle holder	
Ordering number	050100107
Suitable for	Bottle 750ml
Material	Stainless Steel



Bottle holder	
Ordering number	050100007
Suitable for	Bottle 750ml
Material	Stainless Steel



Bottle holder for Primates	
Ordering number	050100127
Suitable for	Bottle 750ml
Material	Stainless Steel

UNO SMALL LAB ANIMAL HOUSING

Drinking bottles - Related Products

Drinking bottle baskets



Bottle Basket	
Ordering number	050118200
Suitable for	18 bottles 200cc 18 bottles 250cc
Material	Stainless Steel



Bottle Basket	
Ordering number	050118250
Suitable for	18 bottles 250cc
Material	Stainless Steel



Bottle Basket	
Ordering number	050118300
Suitable for	18 bottles 300cc 18 bottles 400cc
Material	Stainless Steel



Bottle Basket	
Ordering number	050118400
Suitable for	18 bottles 400cc
Material	Stainless Steel



Bottle Basket	
Ordering number	050118420
Suitable for	18 bottles 420cc
Material	Stainless Steel



Bottle Basket	
Ordering number	050118750
Suitable for	18 bottles 750cc
Material	Stainless Steel

UNO SMALL LAB ANIMAL HOUSING

Drinking bottles - Related Products

Trolleys for bottle baskets

Trolley for Bottle Baskets	
Ordering number	TROLFLM
Suitable for	9 Bottle Baskets
Material	Stainless Steel
Stackable	
Moveable by 4 castors- two with brakes	
Custom sizes available	



UNO SMALL LAB ANIMAL HOUSING

Cage rack made of Stainless Steel 304

- Runner style
- with solid roof to sheath the upper level cages from light and dust
- moveable by 4 castors, 2 of them with brakes

Suitable for Cage type I Long

Ordering number:

for 49 IL cages:

UNO-IL/49

Dimensions: H x W x D

1702 x 1283 x 480

for 64 IL cages:

UNO-IL/64

1912 x 1462 x 480



UNO SMALL LAB ANIMAL HOUSING

Cage rack made of Stainless Steel 304

- Runner style
- with solid roof to sheath the upper level cages from light and dust
- moveable by 4 castors, 2 of them with brakes

Suitable for Cage type II Long

- 64, 30 or 48 cages per rack

Ordering number:

for 64 IIL cages: UNO-IIL/64

Dimensions H x W x D

1992 x 1950 x 480mm

for 30 IIL cages: UNO-IIL/30

Dimensions H x W x D

1552 x 1230 x 480mm

for 48 IIL cages: UNO-IIL/48

Dimensions H x W x D

1992 x 1470 x 480mm



UNO SMALL LAB ANIMAL HOUSING

Cage rack made of Stainless Steel 304

- Runner style
- with solid roof to sheath the upper level cages from light and dust
- moveable by 4 castors, 2 of them with brakes

Suitable for Cage type III and IIIH

- 24 or 30 cages per rack

Ordering number:

for 30 III or IIIH cages: UNOIII(IIIH)/24

Dimensions: H x W x D

1807 x 1206 x 560mm

for 60 III or IIIH cages:

Dimensions: H x W x D

1807 x 1500 x 560mm



UNO SMALL LAB ANIMAL HOUSING

Cage rack made of Stainless Steel 304

- Runner style
- with solid roof to sheath the upper level cages from light and dust
- moveable by 4 castors, 2 of them with brakes

Suitable for Cage type IV

Ordering number:

for 20 IV cages:

UNO-IV/20

Dimensions H x W x D

1692 x 1638 x 690mm

for 24 IV cages:

UNO-IV/24

1992 x 1638 x 690mm



UNO SMALL LAB ANIMAL HOUSING

Cage rack made of Stainless Steel 304

- Runner style
- with solid roof to sheath the upper level cages from light and dust
- moveable by 4 castors, 2 of them with brakes

Suitable for Cage type IVS

- 20 cages per rack

Ordering number:

UNO-IVS/20

Dimensions: H x W x D

1692 x 1638 x 690mm



UNO SMALL LAB ANIMAL HOUSING

Cage rack made of Stainless Steel 316

- MEZ- Single Sided
- moveable by 4 castors, 2 of them with brakes

Suitable for Cage type I Long

- 64 cages per rack

Ordering number:

MEZ-IL/64

Dimensions: H x W x D

1714 x 1586 x 560mm



Cage rack made of Stainless Steel 316

- MDZ- Double Sided
- moveable by 4 castors, 2 of them with brakes

Suitable for Cage type I Long

- 60 cages per rack

Ordering number:

MDZ-IL/60

Dimensions:

1752 x 1048 x 750mm



UNO SMALL LAB ANIMAL HOUSING

Cage rack made of Stainless Steel 304

- MEZ- Single Sided
- moveable by 4 castors, 2 of them with brakes

Suitable for Cage type II

- 30 cages per rack

Ordering number:

MEZ-II/30

Dimensions: H x W x D

1735 x 1343 x 560mm

- 36 cages per rack

MEZ-II/36

1735 x 1576 x 560mm

- 42 cages per rack

MEZ-II/42

1777 x 1576 x 560mm



Cage rack made of Stainless Steel 304

- MDZ- Double Sided
- moveable by 4 castors, 2 of them with brakes

Suitable for Cage type II

- 60 cages per rack

Ordering number:

MDZ-II/60

Dimensions: H x W x D

1752 x 1343 x 750mm

- 70 cages per rack

MDZ-II/70

1804 x 1343 x 750mm



UNO SMALL LAB ANIMAL HOUSING



Cage rack made of Stainless Steel 304

- MEZ- Single Sided
- moveable by 4 castors, 2 of them with brakes

Suitable for Cage type II L

- 30 cages per rack

Ordering number:

MEZ-IIL/30

Dimensions: H x W x D

1777 x 1343 x 560mm



Cage rack made of Stainless Steel 304

- MDZ- Double Sided
- moveable by 4 castors, 2 of them with brakes

Suitable for Cage type IIL

- 70 cages per rack

Ordering number:

MDZ-IIL/70

Dimensions: H x W x D

1804 x 1343 x 750mm

UNO SMALL LAB ANIMAL HOUSING

Cage rack made of Stainless Steel 304

- MEZ- Single Sided
- moveable by 4 castors, 2 of them with brakes

Suitable for Cage type III and/or Cage type IIIH

- 24 cages per rack
- 24 cages with raised lid per rack
- alternativ design with wire cage holders 24 cages per rack

Ordering number:

MEZ-III(IIIH)/24

Dimensions: H x W x D

1777 x 1330 x 640mm

MEZ-III/24H

1833 x 1330 x 640mm

MEZ-III/24W

1833 x 1330 x 640mm



Cage rack made of Stainless Steel 304

- MDZ- Double Sided
- moveable by 4 castors, 2 of them with brakes

Suitable for Cage type III and / or Cages Type IIIH

- 48 cages per rack
- 56 cages per rack

Ordering number:

MDZ-III(IIIH)/48R

Dimensions: H x W x D

1904 x 1330 x 840mm

MDZ-III(IIIH)/48

1842 x 1330 x 840mm

MDZ-III(IIIH)/56

1752 x 1330 x 840mm



Optional design: with roof.



UNO SMALL LAB ANIMAL HOUSING

Cage rack made of Stainless Steel 304

- MEZ- Single Sided
- moveable by 4 castors, 2 of them with brakes

Suitable for Cage type IV

- 18 cages per rack

Ordering number:

MEZ-IV/18

Dimensions: H x W x D

1752 x 1357 x 750mm



- alternativ for 16 cage IV
with raised wire lids

MEZ-IV/16H

1548 x 1754 x 750mm



Cage rack made of Stainless Steel 304

- MDZ- Double Sided
- moveable by 4 castors, 2 of them with brakes

Suitable for Cage type IV

- 36 cages per rack

Ordering number:

MDZ-IV/36

Dimensions: H x W x D

1737 x 1360 x 1250mm



- alternativ for 32 cage IV
with raised wire lids

MDZ-IV/32H

1548 x 1754 x 1250mm



UNO SMALL LAB ANIMAL HOUSING

Cage rack made of Stainless Steel 304

- MEZ- Single Sided
- moveable by 4 castors, 2 of them with brakes

Suitable for Cage type IVS

- 18 cages per rack

Ordering number:

MEZ-IVS/18

Dimensions: H x W x D

1877 x 1374 x 750mm

- Optional design with Roof

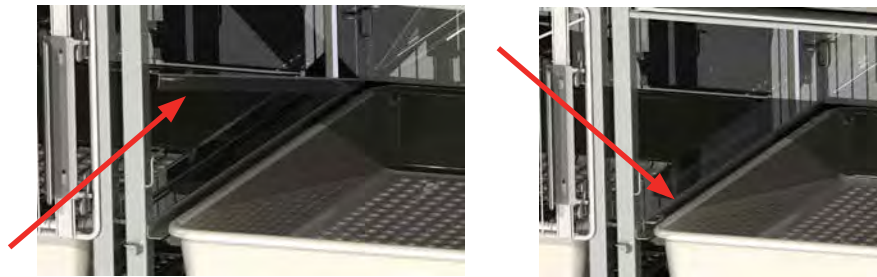
MEZ-IVS/18R

2033 x 1374 x 750mm



UNO 3-CAGE RABBIT RACK

The racks can easily be connected to each other: see photos.



Materials used:

Frame: Stainless Steel

Side panels: Nylon (or clear Polycarbonate)

Cage roof: Nylon

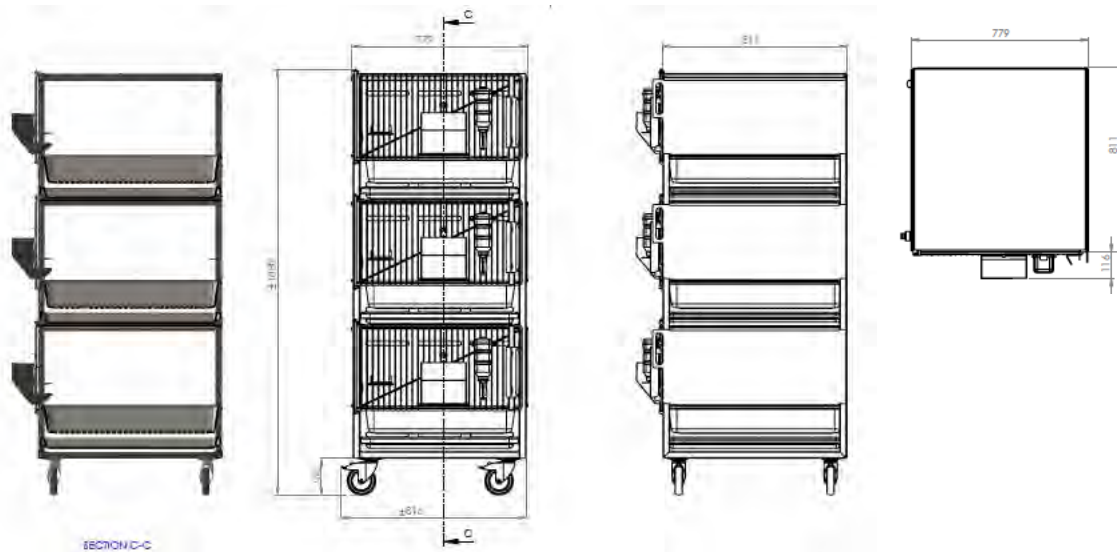
Cage door: Stainless Steel wire door

Bottom and trays: ABS or Noryl

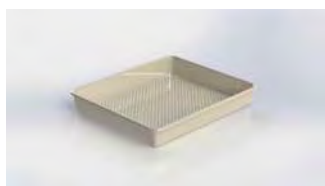
Shelter: Nylon

Feeder: Stainless Steel

Drinking bottle: Polycarbonate (or Polysulphone)



Re-orderable parts:



Bottom: ABS or Noryl



Tray: ABS or Noryl



Drinkbottle w/
s.s. drinking cap



S.s. Feeder

3-CAGE RABBIT RACK



Interlinking racks that allow grouphousing by simply removing the sidewalls or when using the clear polycarbonate side walls (optional) allow visibility between the cages on one level.

Moveable through 4 castors, 2 with brakes.

Perforated bottom and tray can be taken out for cleaning purposes.

Back wall of cage is made of stainless steel plate with diagonal settings for extra support.

Plastic side walls are easily removable. (Optionally available with clear Polycarbonate side walls).

Each cage with detachable wire door, food hopper, bottle holder and drinking bottle with stopper and drinking tube.

Optionally available: a shelter for the cage (inner cage).

Overall dimensions rack:

- 1.880 x 779 x 811mm (H x W x D)
excl. feeder and drinking bottle on the front of the cage door.
- 1.880 x 779 x 927mm (H x W x D)
incl. feeder and drinking bottle on the front of the cage door.

Floor area cage: 4.500cm²

Inner cage height: 46,6cm



GUINEA PIG CAGE RACK

Stainless Steel rack for 5 Guinea pig cages.

Moveable through 4 castors, 2 with brakes.

Each cage with foodhopper and 2 drinking bottles 750ml each.

Food hopper and drinking bottles positioned at the front of the cage.

Optionally available: stainless steel wire or stainless steel perforated lids.

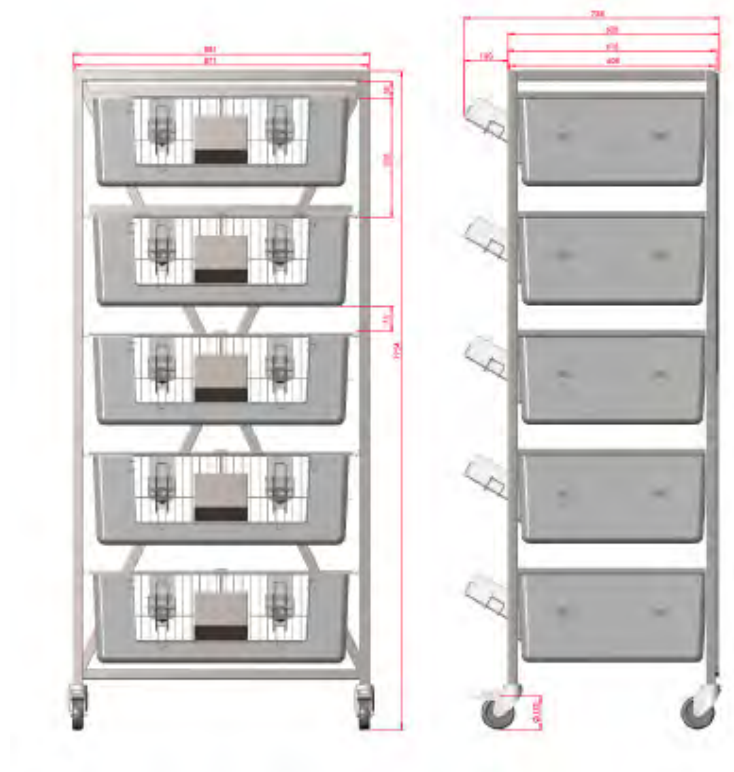


Overall dimensions rack:

- 1.954 x 628 x 881 (H x W x D)
excl. feeder and drinking bottle on the front of the cage door.
- 1.954 x 758 x 881 (H x W x D)
incl. feeder and drinking bottle on the front of the cage door.

Cage body: 811 x 616 x 287mm

UNO GUINEA PIG RACK



Materials used:

Frame: Stainless Steel

Cage body: ABS

Cage front: stainless steel

Feeder: Stainless Steel

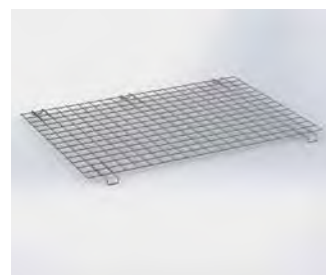
Drinking bottle: Polycarbonate (or Polysulphone)



Cage body



Cage front



Optional Wire lid



Feeder



**Bottle holder
w/ bottle and cap**

RODENT METABOLIC CAGES

Available for Mouse, Rat and Guinea Pig

UNO Metabolic cages are equipped with a unique system for separated collection of faeces and urine. Design and finish are such that the animal has a maximum of comfort. Maintenance is efficient and fast. UNO Metabolic cages are made in stainless steel, making them suitable for labelled compounds.

Every unit comes complete with cage, adjustable feed passage, feed bowl, faeces and urine collection system and drinking bottle holder. All parts can be easily disassembled and the collection system can be slit out.

The adjustable feed passage ensures a minimum of feed waste. The feed bowl can be used for pellet feed and with a special plate, for powdered feed.

Seperate units can be placed in a table stand or in moveable racks.



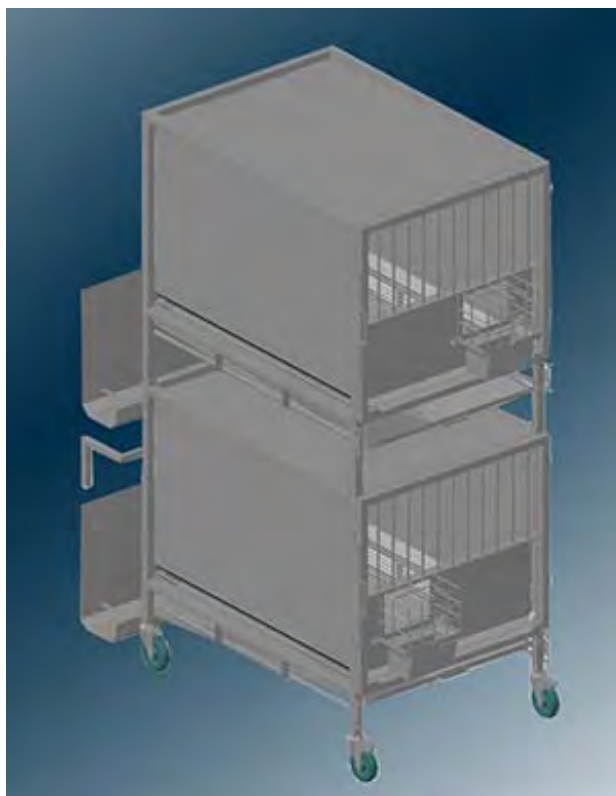
UNO Rodent Metabolic Cages			
	Ordering number	Ordering number	Ordering number
	MOUSE	RAT	GUINEA PIG
Metabolic cage	100100007	100100017	100100027
Cage dimension HxWxD	76 x 115 x 127mm	108 x 115 x 203mm	165 x 203 x 267mm
Table Stand	100100014	100100013	100100114
Collection bottles 20cc	101600026	101600026	101600026
Drinking bottle 300ml	051200031	051200031	051200031
Neoprenstopper with TD100	050100016s	050100016s	050100016s

UNO Rodent Metabolic CAGE RACKS - no cages included			
Removeable stainless steel racks are available for the UNO Metabolic Cages in the following configurations. Each rack is moveable by 4 castors, 2 of which with brakes. Cages have to be ordered separately.			
	Ordering number	Ordering number	Ordering number
	MOUSE	RAT	GUINEA PIG
Suitable for max. 20 cages	100100051	--	--
Suitable for max. 12 cages	--	100100052	100100043



LARGE ANIMAL METABOLIC CAGES

UNO Metabolic cages for large animals are always made on special request; below are some proven designs to have an idea of the possibilities.



Metabolic cage for dog

Double metabolic cage for dogs, a special design that features 2 dog cages placed above each other, in a closed system without any possibility for cross-contamination. The cages are easy to clean, also because of the tiltable urine collection system that enables the rinswater to be disposed of towards the back of the cage into a drainage gutter.

- Stainless Steel
- Dimensions per 2 cages: 80 x 120 x 210cm
- Moveable
- With tiltable Urin Collection system
- With stainless steel floorgrid

Detailed description of UNO Double Metabolism cages for dog. Cages

- Inside dimension: 112,3cm L x 76,2cm W x 71,2cm H (frontside)
- The cages are stackable so that 2 animals are housed above each other.
- The lower cage has 4 castors ø 125mm, to of them with brakes.
- The cages are cross-contamination proof. This means that it is not possible that one animals comes in contact with the other animal nor with food, water, faeces or Urine.
- The feeders are protected from cross-contamination and spillage.
- The feeder can also be used for drinkingwater.

Metabolic system

- In the cage a bar wire floor is placed. The bars are solid ø8mm thick and are placed along the sides of the cages.
- On top of this, a plastic perforated floor can be placed to offer some comfort to the animals when no sampling is required.
- Urine and faeces are collected in a funnel. In this funnel a stainless steel sieve is placed to separate urine and faeces.
- The opening in the funnel is approx 20cm below the cage making the urin collection bottle easy accessible.
- The collection tray is tiltable. In the highest position urin is not collected but discarded toward the back where the cage is connected to the disposal gutter.
- These gutters should be placed on the walls (2 per double cage) in such a way that discarded urin and cleaning water is disposed off.



Metabolic cage for primate

- Stainless steel wire mesh roof
- Dimensions: 1297,5 x 847,5 x 1778 mm (D x W x H)
- With trespasqueezepanel.(back)
- With trespaside walls
- Including foodhopper and drinking nipple per cage, positioned at the side of the cage.
- Each cage with 2 doors and a plexiglass cover to be placed in front of the cage doors when the animal is in study.
- The removable funnel has a sieve inside to separate urine and faeces.
- The cages are moveable through 4 castors, 2 of them with brakes.



Metabolic cages for (mini)-pig.

- The cages are made in stainless steel frame, with trespaside walls and a trespas door
- Dimensions: 65,8 x 102,7 x 170cm (W x L x H)
- They are moveable by 4 Castors, each with brakes.
- A stainless steel feeder/waterer is positioned in the trespas opposite the door.

CAGE ENRICHMENT



MOUSE HOUSE

Autoclavable, red polycarbonate square mouse house.

Dimensions: $\pm 10 \times 5 \times 5$ cm

Ordering code: 210000001



MOUSE STAIRS

Autoclavable, red polycarbonate mouse Stairs.

Dimensions: $\pm 10 \times 5 \times 5$ cm

Ordering code: 210000004



IGLOO

This transparent Igloo also allows mice to control their microenvironment. Mouse igloos have proven to be beneficial not only in helping prevent boredom and aggressive behaviors but to aid in breeding. Igloos were developed for the risk-free use and safety of laboratory mice. The activity wheel is sold separately. Both the Igloo and the Wheel are made of autoclavable polycarbonate.

Dimensions:

Igloo: $\varnothing 10,5$ cm x 6cm Wheel: $\varnothing 15,5$ cm

Overall height Igloo with wheel: 10,5cm

Ordering code: 210000002



COCOON

Cocoon is the latest environmental enrichment bedding product for rodents. Cocoon offers the animal an opportunity to fulfill their nesting instincts. Cocoon's small light weight cylindrical form makes it possible for the animals to move it around their environment which increases the interaction between the animal and the enrichment product.

The fibers of the Cocoon product are very short which is safer for the animal and allows it to create a vaporous cloud, with which it builds its nest much like in its natural habitat. Cocoon is whitened without chlorine.

Sold 6,000 cylinders per case.

Ordering code: 210000201



NESTLETS

- white, paper product

- dimensions: per square 50x50mm, delivered in perforated sheets

- 3.600pcs per box

Ordering code: 210000003



ASPEN CHEW

100% Aspen Enrichment Products are designed for rodent and small animal research. The material is non-toxic, as it emanates no phenol, and thus will not cause respiratory ailments.

Chew sticks: Available in size Small to X-Large

Also available:

Tubes, Mouse House, Labyrinth, Tunnels



COZEE PAD

The Cozee Pad® is designed to reduce the occurrence of lesions on the paws of rodents that are maintained in wire-bottom cages for extended periods of time. It is a multi-purpose device; when placed on the floor inside the cage, the Cozee Pad® provides a secure location preferred by rodents, while the plastic retains warmth and can be chewed by the animal. The Cozee Pad® is sold in packages of 10.

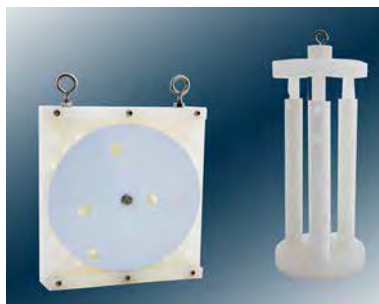
Available for Mouse, Rat and Rabbit.



Primate Choo

The Primate Choo® is designed as a dual purpose forage feeder and chew toy. Six channels are located in the device at different depths and angles. These may be filled with a soft food product, making it more interesting and challenging to access the food. The knurled outer diameter gives a good grip and hand feel. Knurling also gives teeth some purchase when being used as a chew device.

Available for Black or Natural colour.



PRIMATE FORAGING UNITS

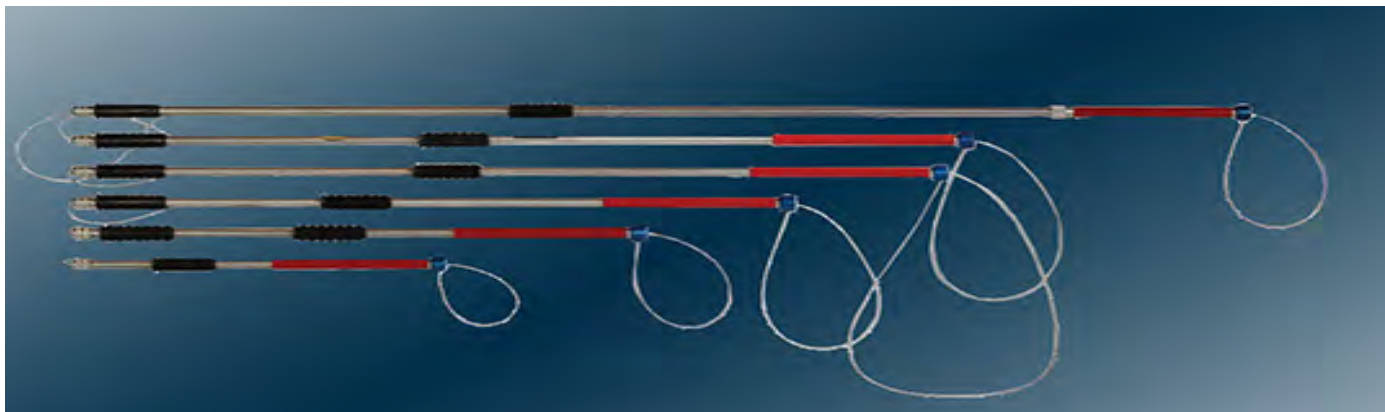
Easy to use, durable and designed to meet the unique needs of various primate species, these P.E.T.® products prevent the development of excessive behaviors and create a more natural environment non-human primates.



PRIMATE HAMMOCK

Sturdy hammocks are available in multiple shapes and sizes, hammocks promote normal behavior for all non-human primate species.

ANIMAL HANDLING



Catching Poles - protection for the animal handlers.

All poles feature an emergency release mechanism. A simple lift and slide knob allows the cable loop to drop away. The swivel head mechanism makes these poles unlike any other on the market.

Model	Length	Description
Standard Size Poles- Aircraft grade Aluminum		
Baton	71cm	Most usefull in confined areas for handling of small animals.
Type 1	91cm	Used mostly for handling cats and small dogs.
Type 2	122 cm	Most popular for general use.
Type 3	152 cm	Popular because of its additional length and larger noose.
Extension Poles- Aircraft grade Aluminum		
Type 4	122-183cm	Extended, it is used when additional length is needed. Retracted, it is used as a heavy duty training pole.
Type 5	213-366cm	When extended, it is used for rescuing animals from waterways, trees etc. Retracted, it is used as a heavy duty training pole.
Stainless Steel Poles		
Type 6	122cm	Constructed for Heavy Duty.
Type 7	152cm	Constructed for Heavy Duty.



Primate Guiding collar and Poles

The Pole & Collar handling System was developed to provide a standardized method for handling nonhuman primates that reduces stress on the animals and helps ensure handlers' safety. Through positive reinforcement, primates quickly learn their role in handling procedures and become willing workers, reducing the need to physically handle the animal by force or use anaesthetic restraint.

Nylon Collar			
Size	Small	Medium	Large
Inside Diameter	5,08cm	6,35cm	7,62cm
Base	10,2cm	10,2cm	10,2cm
Length	15,5cm	15,5cm	15,5cm
Ordering number			
Black	1HCM1O	1HCM2O	1HCM3O
Blue	1HCM1B	1HCM2B	1HCM3B
Green	1HCM1G	1HCM2G	1HCM3G
Red	1HCM1R	1HCM2R	1HCM3R
Yellow	1HCM1Y	1HCM2Y	1HCM3Y

Aluminum Collar					
Primate Species	Medium macaque	Large macaque	Small Baboon	Medium Baboon	Large Baboon
Inside Diameter	6,4cm	7,6cm	8,9cm	10,2cm	11,4cm
Base	10,2cm	10,2cm	12,7cm	12,7cm	15,2cm
Length	13,9cm	15,6cm	17,8cm	19,1cm	20,3cm
Ordering number	1HCM2A (green)	1HCM3A (Blue)	1HCB10 (gold)	1HCB20 (Red)	1HCB30 (Black)
Capture/ Guiding Poles					
Length	Ordering number				
58,4cm	1HCP05				
104cm	HCP10				



P.O. Box 15
NL - 6900 AA Zevenaar
Phone +31 316 524 451
Email info@unobv.com
www.unobv.com